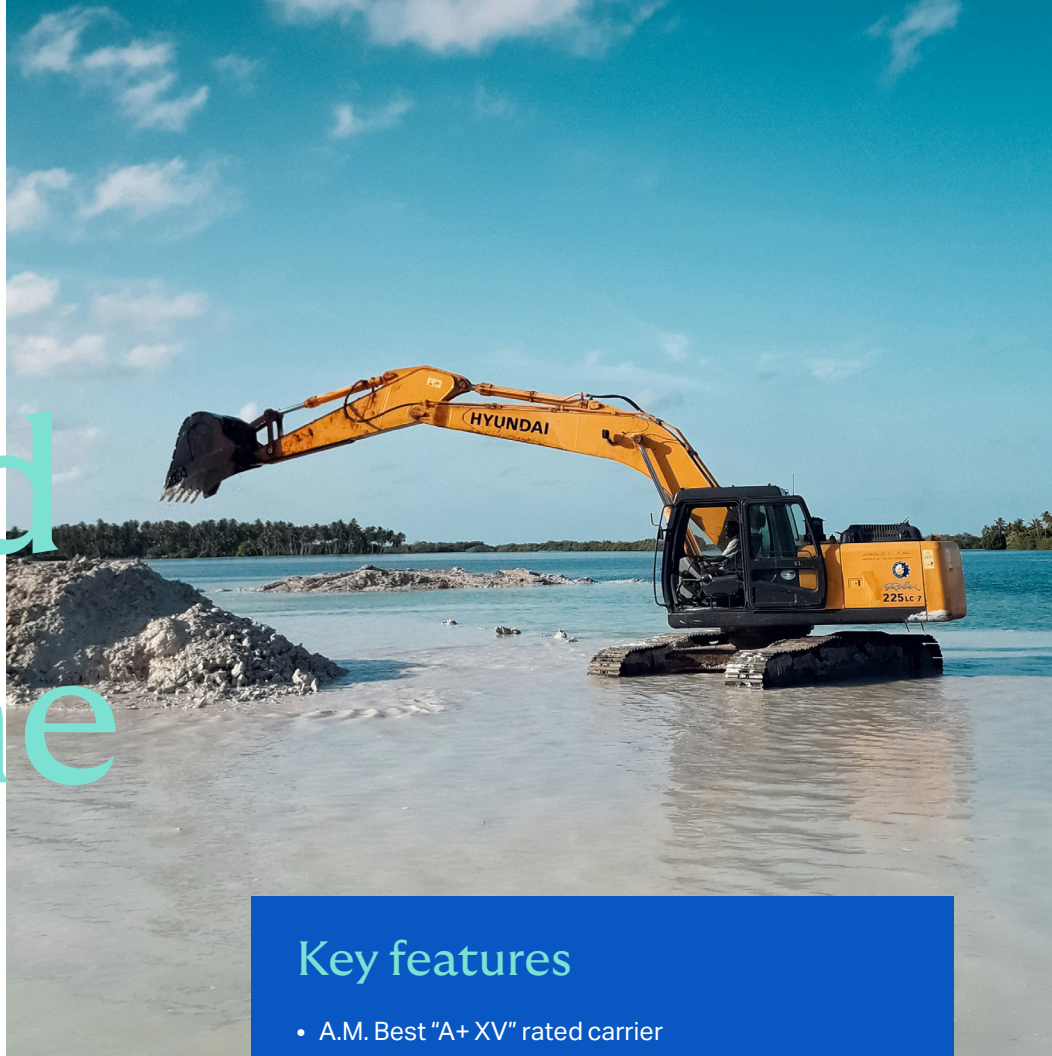


# DUAL

# Inland Marine



## Broad inland marine coverage for complex equipment needs

Enhance your energy, environmental and contractor account placements with comprehensive inland marine solutions tailored to your clients' unique needs.

Protect equipment at every stage with broad coverages protecting against equipment loss at job sites, in transit or stored during non-use. As specialists in complex equipment schedules, we deliver niche solutions for owned, borrowed or leased equipment and tools, equipment held for sale and rented to others, items being transported and much more.

### Key features

- A.M. Best "A+ XV" rated carrier
- Admitted paper, countrywide
- \$25m contractors' equipment – in-house authority

### Our appetite

- Inland marine coverage for those businesses engaged in the energy, utility and environmental industries and associated contractors

### What we cover

- Contractors equipment
- Leased or rented equipment to/from others
- Builders risk/installation floaters
- Riggers liability
- Motor truck cargo
- Waterborne extension

## Expanded oil and gas appetite

Contractors equipment appetite by operations (on-shore only and inland waterways)

- Acidizing, perforating, cementing, fishing, wireline, logging and geophysical services
- Site preparation, equipment installation, including pumps, compressors, tank batteries, collection lines, diking and electrical
- Site equipment service and repair
- Pumpers, pipeline and tank rental
- All non-destructive testing of pipe
- Hot oilers, roustabout, mud and water services
- Workover and well servicing rigs only up to \$1m in value – operations including cleaning, swabbing, rod and tube
- Geophysical including vibrator, shot-hole and surface – no more than 10% if done with other methods

## Expanded appetite – eligible states

- California
- Colorado
- Kansas
- Louisiana
- Montana
- North Dakota
- New Mexico
- Oklahoma
- Texas

### Get started on a submission

Here's what we need:

- Completed ACORD 125
- SOV spreadsheet
- 5-year loss runs
- Resumes for new ventures

### Additional submission requirements

- Completion of DUAL/intact oil and gas supplemental
- \$5,000 minimum premium

## Get in touch

For more information about DUAL's Inland Marine program, send submissions to [submissions@eiurs.com](mailto:submissions@eiurs.com) or contact a member of our team:

### Beverly Williams

Senior Underwriter -  
Property/Inland Marine  
O +1 (973) 631 7575 x161  
M +1 (470) 453 1298  
[bwilliams@dualinsurance.com](mailto:bwilliams@dualinsurance.com)

### Campbell Manin

Underwriter  
+1 (215) 528 3713  
[cmanin@dualinsurance.com](mailto:cmanin@dualinsurance.com)

## Helping you do more

[marketing@dualinsurance.com](mailto:marketing@dualinsurance.com)

[dualinsurance.com](http://dualinsurance.com)